



**Southern**  
Illinois University  
**Carbondale**

**Appendix 1 to the minutes of June 18, 2008**

Evaluation & Developmental Center  
[www.siuc.edu](http://www.siuc.edu)

6/18/08

Re: Signage Committee Report for A/P Council

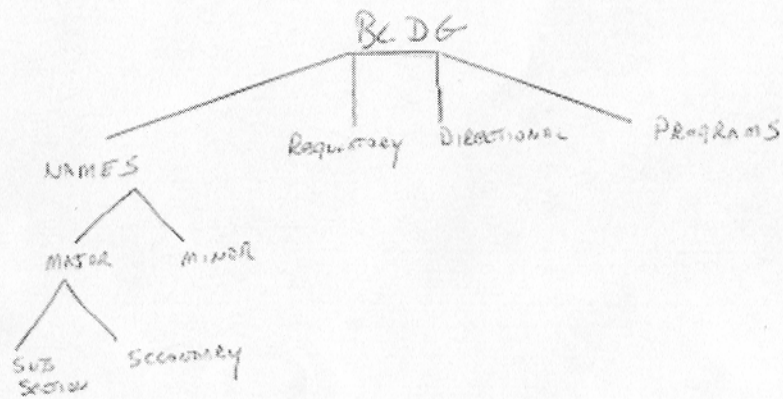
Our committee has met on three occasions (April 11, 23 and May 22) so far. After viewing a significant amount and variety of pictures of present signs on campus during the first meeting, the committee discussed the following issues:

1. Campus Conformity (to guidelines set forth by the committee and then approved by the Chancellor's Office)
2. Sign Style(s)
3. Uniformity (to a schematic breaking down of the various types of signs on campus [building, non-building regulatory, departmental, directional, etc.] )
4. Color schemes
5. Future meetings to approve signage requests from campus departments.
6. Funding sources for new campus signs.

We haven't scheduled the next meeting because we are waiting for certain committee members to do additional fact finding. However, we will continue working to finish this task so departments presently desiring new signs can have theirs completed. A copy of the schematic the committee has formulated as a guide for various signs on campus is on the back side of this report.

Sincerely,

Jon Geiger, Driver Education Specialist  
Evaluation and Developmental Center



SIGNS

